

Holden Clough Community Primary School's Curriculum Newsletter - Year 6 - Autumn 2 - 2023/2024

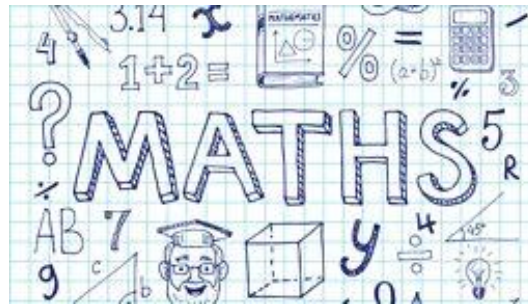
Introduction Welcome back after a well-deserved break! We trust you have all had a restful and relaxing half term holiday and are ready to get stuck straight into learning. This following half term promises to be yet again a busy one, but we're looking forward to seeing the children develop and progress even further. As is always the case in half term dominated by the build up to Christmas, there is a lot to get through and it will be very much full steam ahead for the next eight or so weeks! Parents evening will take place this half term amongst other exciting events!

Year 6

Geography

This term in Geography, children will be beginning the unit: 'Why does population change?'. Throughout the next eight weeks, year 6 will learn:

- That the global population has grown significantly since the 1950s.
- Which factors are considered before people build settlements.
- That migration is the movement of people from one country to another.
- The name of many countries and major cities in Europe and North and South America.
- The name of many counties in the UK.
- The name of many cities in the UK. To confidently name the twelve geographical regions of the UK.
- That London and the South East regions have the largest population in the UK.
- That the global population has grown significantly since the 1950s.
- Which factors are considered before people build settlements.

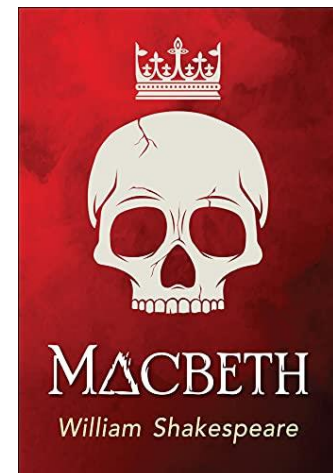


Mathematics

In mathematics this term we will be continuing to develop our four operation skills (addition, subtraction, multiplication and division). Towards the end of the term, we will begin our Fraction unit. We will continue to address misconceptions in prior knowledge, and we would advise children to continue to work on formal written methods of division and multiplication in particular. The weekly arithmetic tests will continue to be sent home every Monday. It is important that children complete these on a weekly basis.

English

This term in English, we will be diving in to the world of William Shakespeare. We will be writing 'Macbeth' inspired pieces to then publish during our very own performance. Details of this will be posted on Class Dojo. Over the course of the term, we will be expanding our knowledge of grammatical terms and phrases and then using this in our writing.



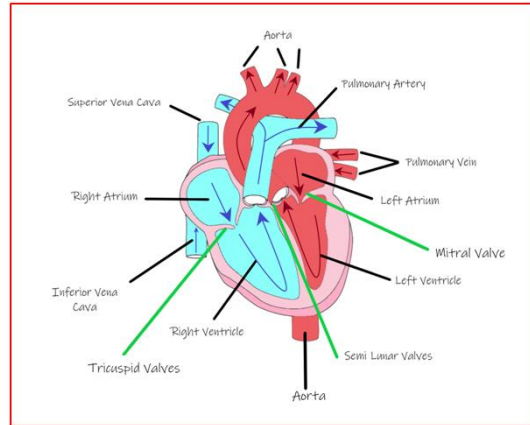
Science


In science we will be beginning our unit on 'Animals including Humans'. It begins by looking at the changes that take place as humans develop to old age, recognising the impact of diet, exercise, drugs and lifestyle on the way our bodies function. We will also learn about the human circulatory system and the functions of the heart, blood vessels and blood.

Parent's Information

If you want to support your child's learning at home, here are a few ideas you might like to try:

- Listen, read and discuss with your child the book they are reading at the moment. If you want to encourage your child to read more narrative/fiction ask your class teacher for ideas.
- Play times table's games and practice division as well as multiplication facts.
- Use Times table Rockstars websites at home - your children should know the log in details!
- Practise your child's spellings with them - they will be bringing them home in their planners at the start of each week and to use Ed shed to practise.




**KEEP
CALM
AND
DO YOUR
HOMEWORK**

Upcoming dates for your diary

- W/C 27th November: Book fair.
- W/C 27th November: Parent's evening.
- 19th December: School closes for all pupils.

PE

This half term, due to our production of Macbeth, we will be reducing our P.E sessions to once a week. 6JH will be having P.E on a Friday and 6AH will be having P.E on a Thursday. On a Tuesday, year 6 are still able to come in to school wearing P.E kits as we will be remaining active during our play practice.

Homework

Just a reminder of homework allocation for this academic year. All homework will be marked as a class whereby misconceptions will be addressed.

Monday - Arithmetic practice paper due the following Monday.

Wednesday - pages for the SPAG CGP book due the following Wednesday.

Friday - pages from the reasoning CGP book due the following Friday.

New spellings to be given out on weekly to be learnt for testing the following week.

Spanish

Spanish will continue to be on a Monday (6JH) and a Thursday (6AH) and taught by the company 'Junior Jam'.